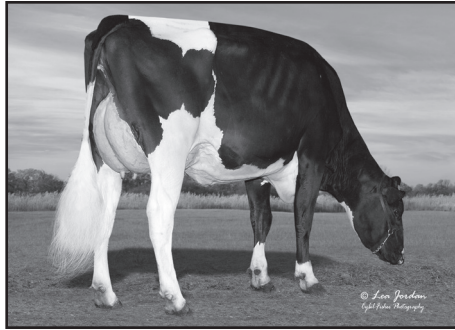


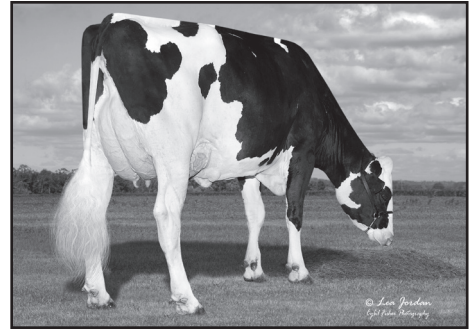
Lars-Acres. . Group of 15 Sells as 1 Lot!



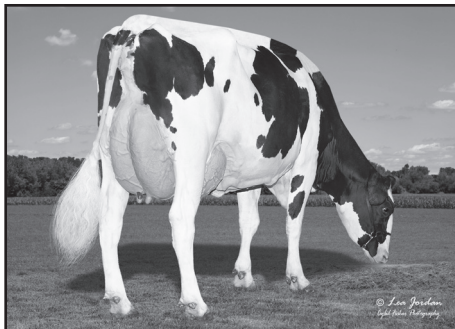
LARS-ACRES ROSKO SHADY VG-85
2nd dam of heifers C and G



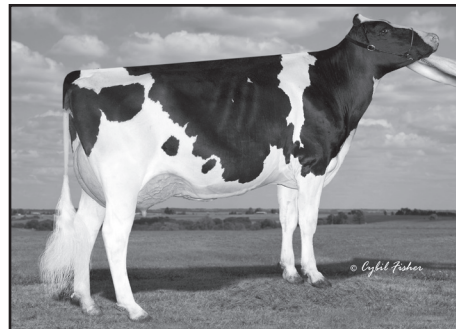
S-S-I LA 28180 22861 EX-90
2nd dam of heifer F



LARS-ACRES GRANDA MARILI VG-85
2nd dam of heifer J



LARS-ACRES SSI 25402 VG-86
2nd dam of heifer L



LARS-ACRES DELTA FERRARI 2E-91 DOM
3rd dam of heifers A and I

WORLD CLASSIC
2024



lot **37G**

15 HEIFERS LISTED SELL AS ONE LOT

LARSON ACRES INC
18218 W STATE ROAD 59
EVANSVILLE, WI 53536-9038
608-751-9166 MIKE LARSON
mike@larsonacres.com

These 15 heifers sell as a group in absentia and are housed at Larson Acres Inc, Evansville, WI
Heifers must be picked up by October 18, 2024,
after which board of \$8/day/head applies.



THE LARSON FAMILY

Front row: Mike, Ed, Barb & Sandy Larson. Back row: Luke, Jim, Dane & Brooke Trustem

The Larson Family of Larson Acres has been honored as World Dairy Expo's 2024 DAIRY PRODUCERS OF THE YEAR!

The Larson family of Evansville, Wisconsin has been farming in southern Wisconsin for nearly a century. Focusing on three key pillars – quality, pride and family – Larson Acres is truly a superior example of modern dairy farming. Milking 2,800 Holsteins in both a conventional double-20 parallel parlor and a cross-ventilated double-22 parallel parlor, the herd averages 109 pounds of energy corrected milk daily, with a 4.68% fat, 3.4% protein and 56,000 somatic cell count.

In addition to stellar production records, Larson Acres has bred 130 Excellent cows, 16 Gold Medal Dams, 40 Dams of Merit, four Gold Medal Sires and 16 regional and/or national Elite Performer Award recipients. The cows play a pivotal role at Larson Acres, but the people are just as important to the Larson family, who open their barn doors to welcome community members, industry leaders, fellow dairy producers, international guests, school children and more.